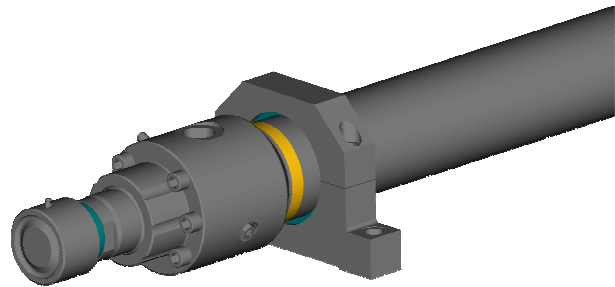


Work roll retracting cylinders

Reference list since 1983



Customer	Quantity	Dimensions (in mm) piston/rod/stroke	Hunger Drawing No.
Schloemann Siemag, Germany	5	300/180/5730	114 707
Schloemann Siemag, Germany	2	400/280/6450	115 429
Schloemann Siemag, Germany	2	230/160/7100	115 430
Schloemann Siemag, Germany	1	160/110/5150	115 815
Schloemann Siemag, Germany	3	190/160/7960	116 671
Schloemann Siemag, Germany	1	180/125/7700	117 751
Schloemann Siemag, Germany	3	200/140/7000	117 738
Schloemann Siemag, Germany	3	320/220/5520	117 743
Schloemann Siemag, Germany	3	320/220/6320	117 744
SMS Schloemann-Siemag AG, Germany	1	180/125/7700	117 751
SMS Schloemann-Siemag AG, Germany	1	180/125/6000	117 954
Schloemann Siemag AG, Germany	1	250/180/6013	118 876
SMS Schloemann-Siemag AG, Germany	1	200/140/7400	118 978

Schloemann Siemag AG, Germany	4	280/200/7800	119 207
Schloemann Siemag AG, Germany	1	320/220/12010	119 208
Schloemann Siemag AG, Germany	1	320/220/10210	119 211
Schloemann Siemag AG, Germany	2	220/160/6013	119 336
Schloemann Siemag AG, Germany	1	360/200/7014	119 337
SMS Schloemann-Siemag AG, Germany	2	250/180/6240	119 676
SMS Schloemann-Siemag AG, Germany	1	280/200/10510	119 719
SMS Schloemann-Siemag AG, Germany	3	250/180/6150	119 720
SMS Demag AG, Germany	1	600/320/12800	120 333
SMS Meer GmbH, Germany	2	280/200/10510	120 397
SMS Meer GmbH, Germany	3	250/180/8540	120 401
SMS Meer GmbH, Germany	3	280/200/9170	120 402
SMS Meer GmbH, Germany	2	280/200/7010	120 403
SMS Siemag AG, Germany	1	200/140/7400	120 928
SMS Siemag AG, Germany	1	250/180/6013	120 930
SMS Demag AG, Germany	1	400/280/9000	121 065
SMS Demag AG, Germany	3	250/180/6013	121 070
SMS Siemag AG, Germany	1	250/180/6013	121 071
SMS Meer GmbH, Germany	1	280/200/10510	121 110
SMS Meer GmbH, Germany	3	250/180/6150	121 111
Rourkela Steel Plant, India	1	125/90/4100	121399
SMS, Germany	1	400/250/6100	121 451
SMS, Germany	1	280/200/6800	121 452
SMS Demag AG, Germany	1	320/220/5350	121 471
SMS Siemag AG, Germany	1	340/240/8100	121 672

Lohr am Main, 27.08.12